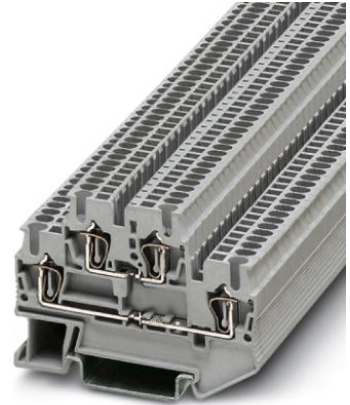


STTB 1,5 BU

Order No.: 3031160

The illustration shows version STTB 1,5 in gray

<http://eshop.phoenixcontact.de/phoenix/treeViewClick.do?UID=3031160>Double-level terminal block with a spring-cage connection, cross
section: 0.08 mm² - 1.5 mm², width: 4.2 mm, color: Blue

Commercial data	
EAN	4017918186715
Pack	50 Pcs.
Customs tariff	85369010
Weight/Piece	0.00884 KG
Catalog page information	Page 78 (CL-2007)

Product notesWEEE/RoHS-compliant since:
01/01/2005

<http://www.download.phoenixcontact.com>
Please note that the data given here has been taken from the online catalog. For comprehensive information and data, please refer to the user documentation. The General Terms and Conditions of Use apply to Internet downloads.

Technical data**General**

Number of levels	2
Number of connections	4
Color	blue

Insulating material	PA
Inflammability class acc. to UL 94	V0

Dimensions

Width	4.2 mm
Length	67.5 mm
Height NS 35/7,5	47.5 mm
Height NS 35/15	55 mm

Technical data

Rated surge voltage	6 kV
Pollution degree	3
Surge voltage category	III
Insulating material group	I
Connection in acc. with standard	IEC 60947-7-1
Nominal current I_N	17.5 A
Nominal voltage U_N	500 V

Connection data

Conductor cross section solid min.	0.08 mm ²
Conductor cross section solid max.	1.5 mm ²
Conductor cross section stranded min.	0.08 mm ²
Conductor cross section stranded max.	1.5 mm ²
Conductor cross section AWG/kcmil min.	28
Conductor cross section AWG/kcmil max	16
Conductor cross section stranded, with ferrule without plastic sleeve min.	0.25 mm ²
Conductor cross section stranded, with ferrule without plastic sleeve max.	1.5 mm ²
Conductor cross section stranded, with ferrule with plastic sleeve min.	0.25 mm ²
Conductor cross section stranded, with ferrule with plastic sleeve max.	1.5 mm ²
2 conductors with same cross section, stranded, TWIN ferrules with plastic sleeve, max.	0.5 mm ²
Type of connection	Spring-cage connection
Stripping length	10 mm
Internal cylindrical gage	A1

Certificates / Approvals

Approval logo



CSA

Nominal voltage U_N	300 V
Nominal current I_N	15 A
AWG/kcmil	26-14

CUL

Nominal voltage U_N	300 V
Nominal current I_N	15 A
AWG/kcmil	26-14

UL

Nominal voltage U_N	300 V
Nominal current I_N	15 A
AWG/kcmil	26-14
Certification	BV, CB, CSA, CUL, DNV, GOST, LR, NK, UL, VDE-PZI

requested approbations

Certification Ex:	IECEX, KEMA-EX
-------------------	----------------

Accessories

Item	Designation	Description
------	-------------	-------------

Assembly

Item	Designation	Description
3030747	ATP-STTB 4	Partition plate, for visual and electrical separation of terminal groups, width: 2 mm, color: gray
3022218	CLIPFIX 35	Snap-on end bracket, for 35 mm NS 35/7.5 or NS 35/15 mounting rail, can be fitted with Zack strip ZB 8 and ZB 8/27, terminal strip marker KLM 2 and KLM, width: 9.5 mm, color: gray
3030459	D-STTB 2,5	Cover, width: 2.2 mm, color: gray
1201442	E/UK	End clamp, for supporting the electronic base. If mounted vertically, 2 end clamps are required in each case
0801762	NS 35/ 7,5 CU UNPERF 2000MM	DIN rail, material: Copper, unperforated, height 7.5 mm, width 35 mm, length: 2 m

0801733	NS 35/ 7,5 PERF 2000MM	DIN rail, material: Steel, perforated, height 7.5 mm, width 35 mm, length: 2 m
0801681	NS 35/ 7,5 UNPERF 2000MM	DIN rail, material: Steel, unperforated, height 7.5 mm, width 35 mm, length: 2 m
1201756	NS 35/15 AL UNPERF 2000MM	DIN rail, deep-drawn, high profile, unperforated, 1.5 mm thick, material: Aluminum, height 15 mm, width 35 mm, length 2 m
1201895	NS 35/15 CU UNPERF 2000MM	DIN rail, material: Copper, unperforated, 1.5 mm thick, height 15 mm, width 35 mm, length: 2 m
1201730	NS 35/15 PERF 2000MM	DIN rail, material: Steel, perforated, height 15 mm, width 35 mm, length: 2 m
1201714	NS 35/15 UNPERF 2000MM	DIN rail, material: Steel, unperforated, height 15 mm, width 35 mm, length: 2 m
1201798	NS 35/15-2,3 UNPERF 2000MM	DIN rail, material: Steel, unperforated, 2.3 mm thick, height 15 mm, width 35 mm, length: 2 m

Bridges

3030116	FBS 2-4	Plug-in bridge for cross-connections in the terminal center, 2-pos., color: Red
3030129	FBS 3-4	Plug-in bridge for cross-connections in the terminal center, 3-pos., color: Red
3030132	FBS 4-4	Plug-in bridge for cross-connections in the terminal center, 4-pos., color: Red
3030145	FBS 5-4	Plug-in bridge for cross-connections in the terminal center, 5-pos., color: Red
3030158	FBS 10-4	Plug-in bridge for cross-connections in the terminal center, 10-pos., color: Red
3030352	FBS 20-4	Plug-in bridge for cross-connections in the terminal center, 20-pos., color: Red

Marking

0810575	STP 4-2	Double marker carrier, snaps onto the double-level spring-cage terminal block STTB 1.5, labeled with ZB 4 or ZBF 4
3030958	WST 1,5	Warning cover, 5-pos., for terminal width: 4.2 mm
0803579	ZBFM 4/WH:UNBEDRUCKT	Zack marker sheet, flat, unprinted: 100-section, 10 strips à 10 markers, sufficient for 100 terminal blocks, for all terminal blocks, pitch 4.2 mm, labeling with M-PEN or CMS system, color: white

Plug/Adapter

3206131	ISH 1,5/0,2	Insulation stop sleeve, color: White
3031034	ISH 1,5/0,5	Insulation stop sleeve, color: gray
3030925	PAI-4	Test adapter, for 4 mm diameter test plug PS and safety test plug, makes contact in the bridge shaft
3030970	PS-4	Modular test plug, for individual assembly of test plug strips, for ST 1,5...terminal blocks, can be labeled with ZBF 4, color: red

Tools

1204504	SZF 0-0,4X2,5	Screwdriver, blade: 0.4 x 2.5 x 100 mm, length 180 mm
---------	---------------	---